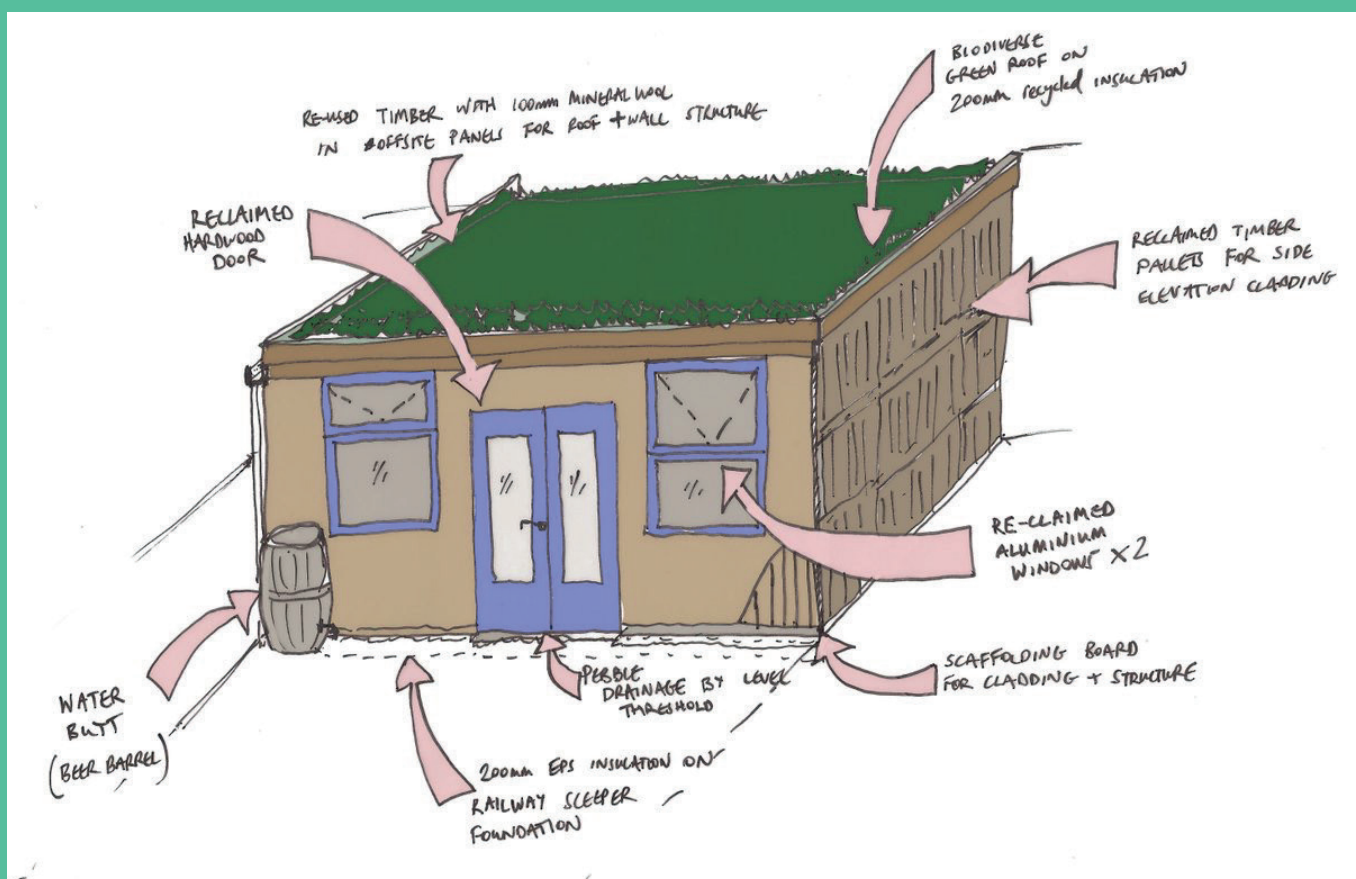


How to build a sustainable shed – a circular economy mini case study

Tom Dollard, Head of Sustainable Design from ISEP member, Pollard Thomas Edwards, discusses why the circular economy matters more than building new zero-carbon homes. Here's a **case study** on his project on how to build a 'regenerative' home-office shed in your back yard



[SEE MORE PROJECTS ONLINE](#)